

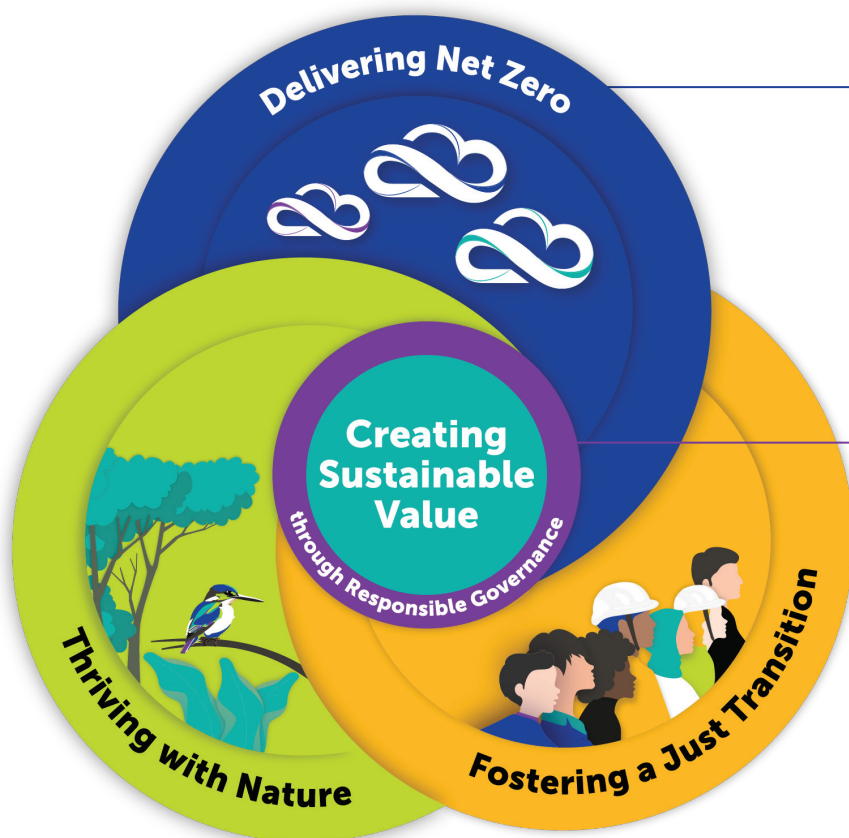
Our Approach to Sustainability

The refreshed PETRONAS Sustainability Approach provides a unified approach to navigate and support the delivery of the PETRONAS Energy Transition Strategy, while grounded in responsible governance.

This approach marks a new step in our sustainability journey, moving us from ambition to action to create an enduring positive impact.

It is designed to seamlessly integrate climate change, nature and social considerations into our practices and processes, making sustainability a value driver to our Core and New Business functions.

By thoroughly embedding sustainability across the organisation, we aim to strengthen resilience, drive results and create desired impact wherever we operate.



Creating Sustainable Value through Responsible Governance

Delivering Net Zero

Thriving with Nature

Fostering a Just Transition



Scan the QR code to access PETRONAS' Sustainability Governance Structure.

Material Topics

Align with UN SDGs

With our purpose guiding our efforts to be a progressive energy and solutions partner, we believe that creating sustainable value and practising responsible governance are essential for organisational resilience. This approach supports our PETRONAS Energy Transition Strategy, including our ambitions of achieving net zero carbon emissions, thriving with nature and fostering a just transition.

- CG** Corporate Governance
- CDP** Cyber Security and Data Protection
- EC** Economic Contribution
- EI** Ethics and Integrity
- IT** Innovation and Technology
- LCT** Lower-Carbon and Energy Transition Business
- SM** Safety Management



The evolving energy landscape requires urgent action to respond to the expanding challenge of climate change. To deliver on our Net Zero Carbon Emissions by 2050 Pathway, we will reduce emissions across our core operations while also investing in lower-carbon business growth opportunities, and deepen our understanding of how climate change affects the resilience of our assets and value chains to ensure we remain adaptive and future-ready.

- CC** Climate Change
- GHG** Greenhouse Gas Emissions



Nature and biodiversity are essential for sustaining life on Earth and we recognise our operations' impact on them and our dependency on healthy ecosystems. We are committed to using natural resources responsibly, promoting circular practices and, where possible, addressing the loss of nature and biodiversity. We engage in practices that restore, protect and conserve ecosystems in Malaysia and the countries where we operate.

- CE** Circular Economy
- EM** Environmental Management
- NB** Nature and Biodiversity



While energy transition will vary from country to country, it must always be inclusive and drive broader societal progress. We are committed to advancing a just transition that upholds human rights and support our employees, contractors, suppliers, partners and communities to have access to equitable opportunities for socio-economic growth.

- EAR** Employee Attraction, Retention and Development
- HW** Health and Well-being
- HR** Human Rights
- SC** Sustainable Supply Chain

